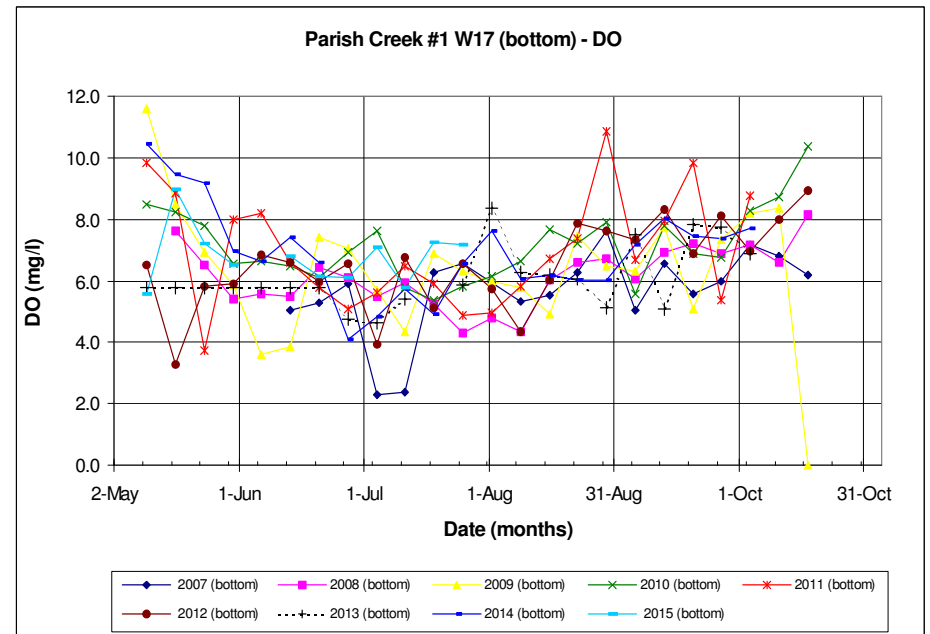
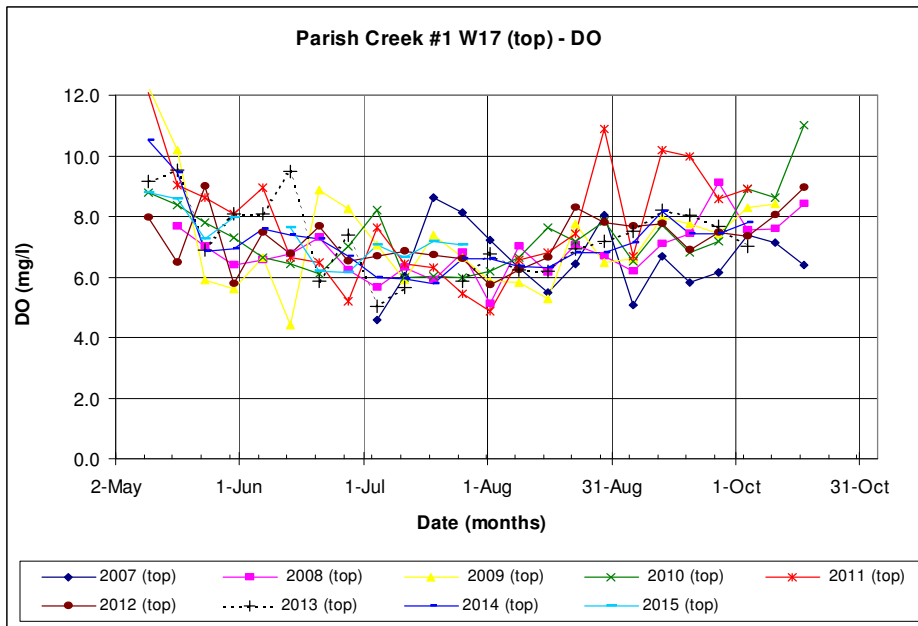
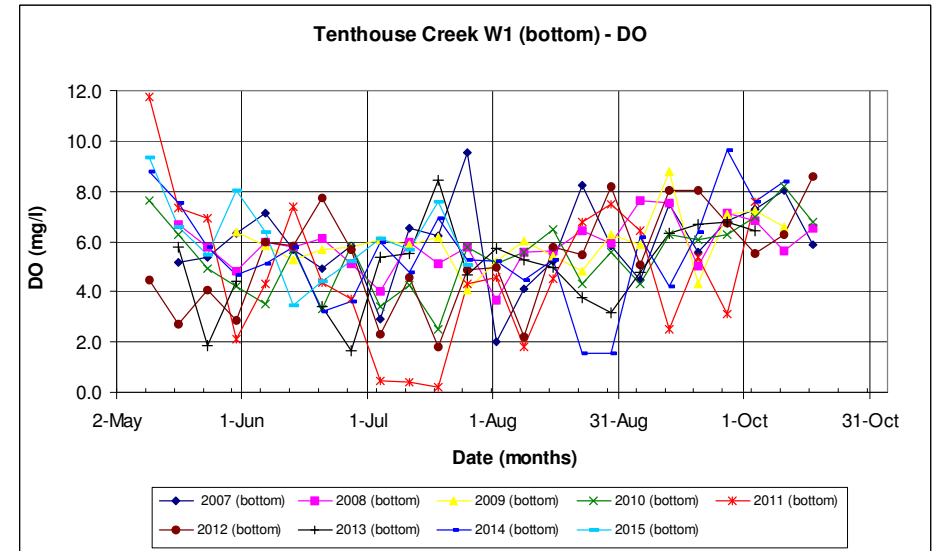
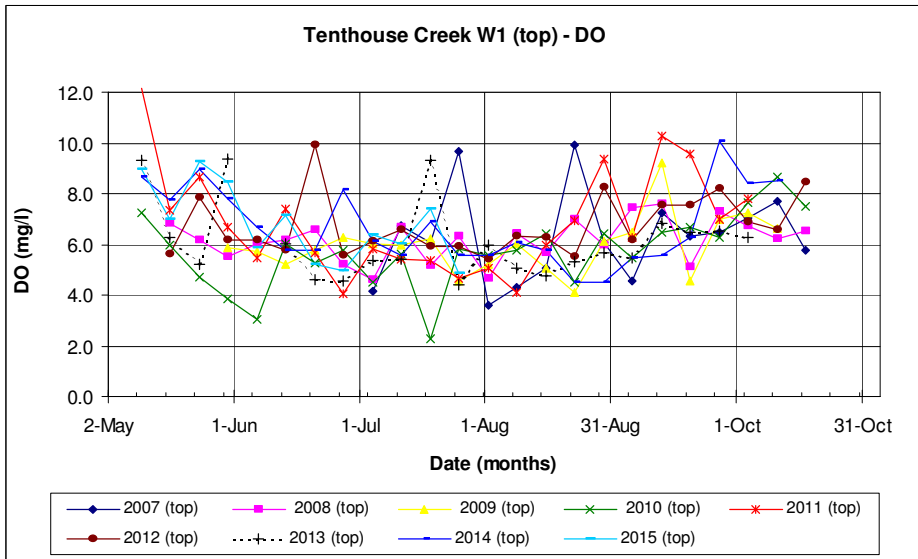
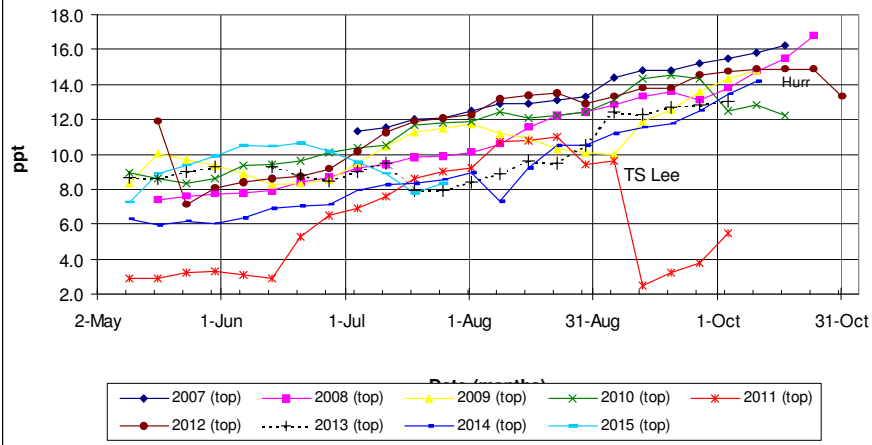


West/Rhode River Water Quality

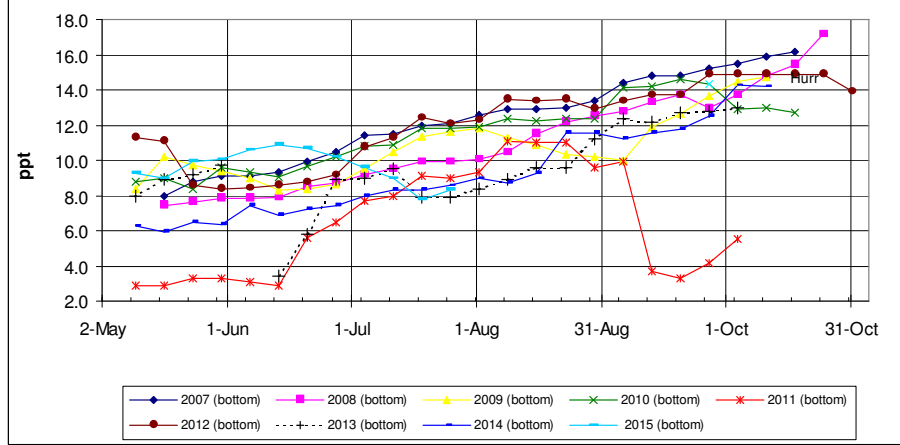
From the weekly samples of the West and Rhode Riverkeeper (2007-2015)



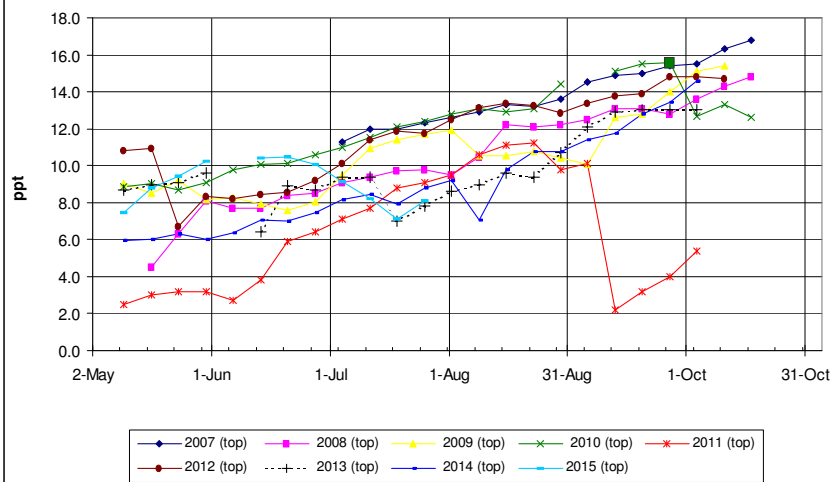
Tenthouse Creek W1 (top) - Salinity



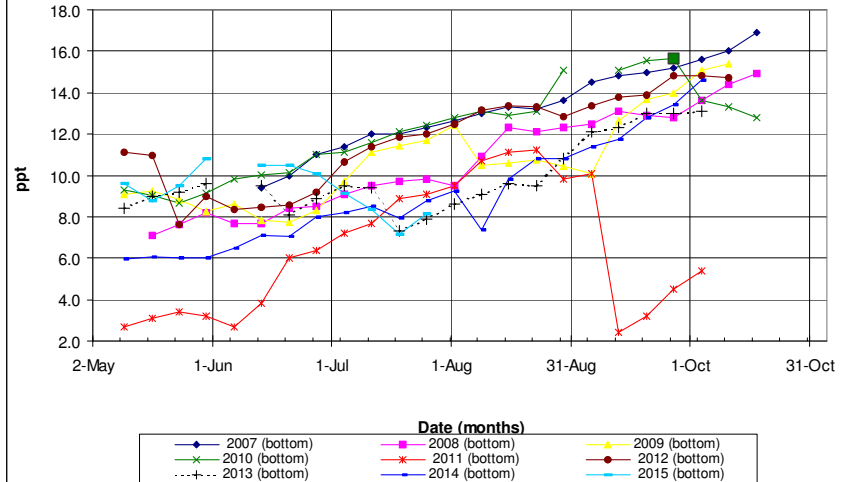
Tenthouse Creek W1 (bottom) - Salinity



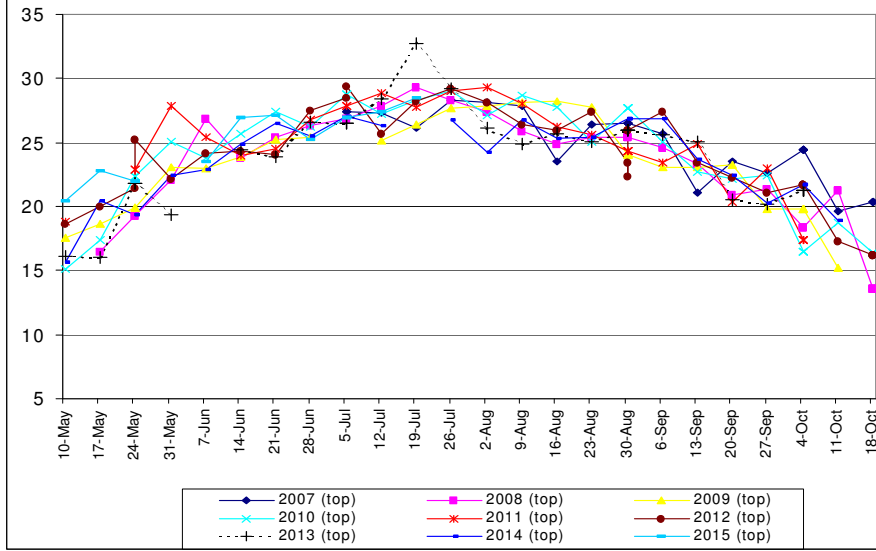
Parish Creek #1 W17 (top) - Salinity



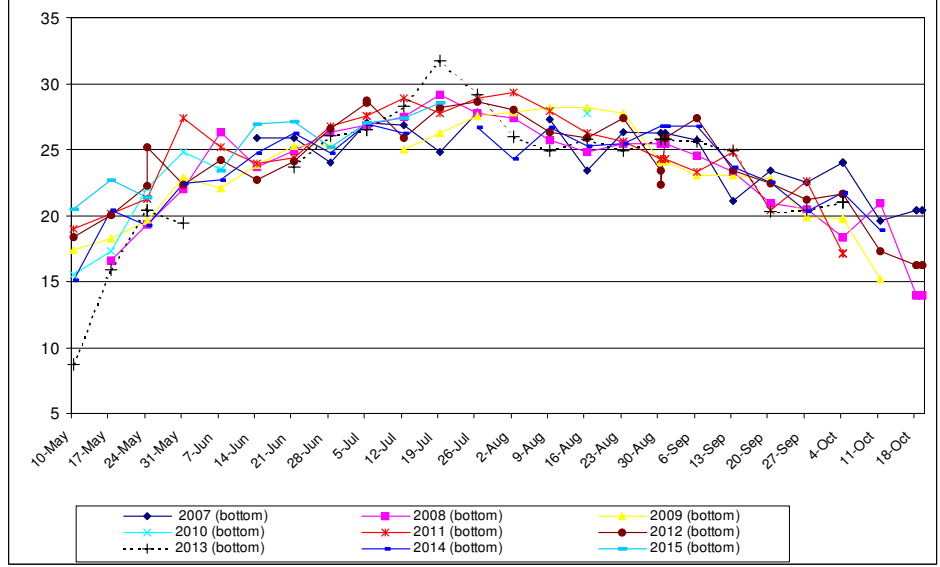
Parish Creek #1 W17 (bottom) - Salinity



Temperature (W17-top)



Temperature (W17-bottom)



Average Temperature and Salinity W17

